



**ALASKA DIVISION OF HOMELAND SECURITY &
EMERGENCY MANAGEMENT**

SITUATION REPORT 22-164 • JUNE 13, 2022



Toll-Free 1.800.478.2337

Anchorage Area 907.428.7000

SEOC 907.428.7100

<p><u>SEOC Preparedness Level</u> Level 2 – Heightened Awareness</p>	<p>http://ready.alaska.gov</p>	<p><u>National Terrorism Advisory System:</u> Read the NTAS Bulletin here</p>
<p><u>Maritime Security (MARSEC)</u> Level: 1-Minimum Appropriate Security Measures</p>	<p>WHO Novel Coronavirus Pandemic (COVID-19): 2019 Novel Coronavirus</p>	<p><u>Alaska Military Installation Force Protection Level:</u> FPCON Bravo</p>

(Significant changes from previous situation reports are in red.)

Significant Issues:

Statewide Fires

Statewide firefighting and emergency management resources are engaged in response to wildland fires in Alaska.

On Friday June 10, Governor Dunleavy declared a disaster emergency for the Lower Yukon Regional Education Attendance Area to support wildland fire response and recover for communities threaten by fire including St. Mary’s, Mountain Village, Pilots Station, and Pitkas Point.

The East Fork Fire (#160), at over 150,000 acres is burning near St. Mary’s. The fire is being managed by the Green Type 2 Alaska Incident Management Team. Fire conditions prompted a precautionary relocation of 125 vulnerable individuals to Bethel by the Yukon Kuskokwim Health Corporation (YKHC). YKHC opened two shelters in Bethel, one at the National Guard Armory and one at the Gladys Jung Elementary School. Red Cross deployed 8 personnel to assist YKHC with shelter operations and the Salvation Army, Alaska Voluntary Organizations Active in Disasters, Association of Village Council Presidents, City of Bethel, Lower Kuskokwim School District, local churches, and public voluntary donations are supporting the shelters with food and supplies.

The Aghaluk Mountain Fire (#206), at over 125,000 acres, is burning near the community of Sleetmute. Additional suppression and incident management resources are being deployed to this fire which also is near Red Devil, Georgetown, and Crooked Creek.

The full statewide fire situation update is available from the Alaska Interagency Coordination Center ([link referenced below under fire section of this SITREP](#)).

River Watch 2022

Online registration for Individual Assistance is still available at <https://ready.alaska.gov> until June 16, 2022

Threat Level Changes:

None.

State of Alaska Department of Health and Social Services (DHSS)

DHSS is now leading the State of Alaska COVID-19 Recovery through Department Operations, supported by SEOC and other state departments as required.

For current COVID-19 information, see:

<https://covid19.alaska.gov/>

<https://www.cdc.gov/coronavirus/2019-ncov/index.html>

NTAS Bulletin

To read current or expired advisories, click the link below:

<https://www.dhs.gov/national-terrorism-advisory-system>

Travel Alerts and Conditions

For current driving conditions dial 511 or link to <https://511.alaska.gov/>

Barry Arm Landslide / Tsunami Risk

For the latest information on the Barry Arm Landslide and Tsunami risk, click here:

[DGGG Barry Arm Landslide and Tsunami Hazard](#)

Recent Earthquakes

USGS Earthquake Information: <http://earthquake.usgs.gov/>

National Tsunami Warning Center: <http://tsunami.gov/>

Alaska Volcanoes

Great Sitkin Alert Level: **Watch** and Aviation Color Code: **Orange**

Cleveland Alert Level: **Advisory** and Aviation Color Code: **Yellow**

Pavlof Alert Level: **Watch** and Aviation Color Code: **Orange**

Semisopchnoi Alert Level: **Watch** and Aviation Color Code: **Orange**

For Alaska Volcano updates, go to: <https://www.avo.alaska.edu/>

Air Quality Index (AQI) Advisories

Air quality advisory for Central and Eastern Alaska will be impacted by wildfire smoke from the large complex of fires located in Southwest and Western Alaska. Advisory will be issued until end of event.

Air quality advisory for Western Interior Alaska will be impacted by smoke from Southwest, Hog Butte, and Submarine Creek fires. Advisory will be issued until end of event.

Air quality advisory for all communities in Southwest Alaska will be impacted by wildfire smoke from large complex of fires throughout the Southwest region. Advisory will be issued until end of event.

Air Quality will vary between GOOD and UNHEALTHY depending on wind flow and proximity to the fires in all of the above areas.

For the most up to date Air Quality Index Advisories:

<http://dec.alaska.gov/Applications/Air/airtoolsweb/Home/Index>

Spills of Oil and Hazardous Substances

The ADEC Spill Prevention and Response page is located at:

<http://dec.alaska.gov/spar/ppr/spill-information/response/>

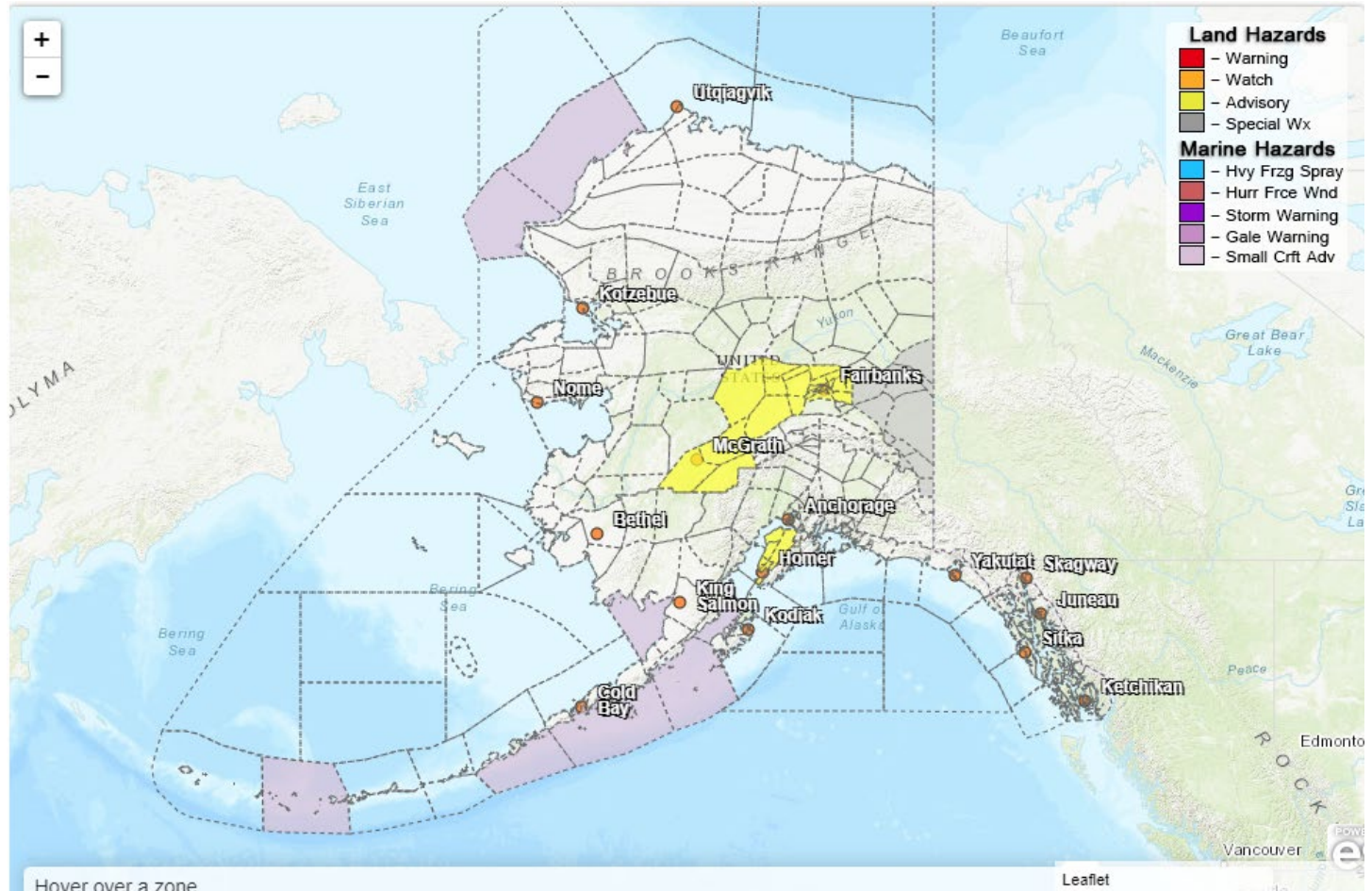
Alaska Cyber Security Information

State Employees may sign up for cyber security notifications and alerts at

<https://oit.alaska.gov/security>

CISA-Cybersecurity Services and Tools: www.cisa.gov/free-cybersecurity-services-and-tools

Significant Weather:



Special weather statement

For more information and the most current weather, Watches / Warnings / Advisories go to:

<http://www.weather.gov/arh>.

Fire Weather:

Dense smoke advisories in effect for Central Interior, Middle Tanana Valley, and Upper Kuskokwim Valley until 10:00AM today.

For more information and the most current fire related weather and warnings, go to:

<https://dnr.alaska.gov/burn> or: <https://fire.ak.blm.gov/predsvcs/weather.php>

2022 Fire Season:

The Alaska Interagency Coordination Center is at Preparedness Level 3.

Wildland fire totals for 2022:

- Total Fires: 248
- Total Acres: 678,522 There are currently 85 active fire(s) with 7 fire(s) staffed.

Current fire information is at <https://fire.ak.blm.gov/> or <https://akfireinfo.com>

The Next Situation Report: will be 14 June 2022. A significant change in the situation or the threat level will prompt an interim report. This report is posted on the internet at <https://ready.alaska.gov/sitrep>. To register for email distribution, go to <http://list.state.ak.us/mailman/listinfo/dhsem.situation.report>. Direct questions regarding this report to the SEOC at 907-428-7100 or seoc@alaska.gov